



violin I

50

Musical staff 50, starting at measure 50. The key signature is one sharp (F#). The staff contains a melodic line with a fermata over the final measure. Above the final measure, there are three accents (^) over the notes, with a 'V' above the first one. The staff ends with a double bar line and repeat dots.

57

Musical staff 57, starting at measure 57. The key signature is one sharp (F#). The staff contains a melodic line with a fermata over the final measure. Above the final measure, there is a '2' indicating a second ending.

63

Musical staff 63, starting at measure 63. The key signature is one sharp (F#). The staff contains a melodic line with a fermata over the final measure.

69

Musical staff 69, starting at measure 69. The key signature is one sharp (F#). The staff contains a melodic line with a fermata over the final measure. The dynamic marking *mf* is placed below the staff.

77

Musical staff 77, starting at measure 77. The key signature is one sharp (F#). The staff contains a melodic line with a fermata over the final measure. The dynamic marking *f* is placed below the staff.

83

Musical staff 83, starting at measure 83. The key signature is one sharp (F#). The staff contains a melodic line with a fermata over the final measure. The dynamic marking *f* is placed below the staff, and *ff* is placed below the staff further to the right. The tempo marking **Largo** is placed above the staff.

Violon 2

# Allegro

pour deux violons et basse, dans le style baroque

Olivier Miquel

Allegro ♩ = 132

*f*

7

14

24

31

37

46



# Violoncelle

# Allegro

pour deux violons et basse, dans le style baroque

Olivier Miquel

Allegro ♩ = 132



8



13



19



26



32



38



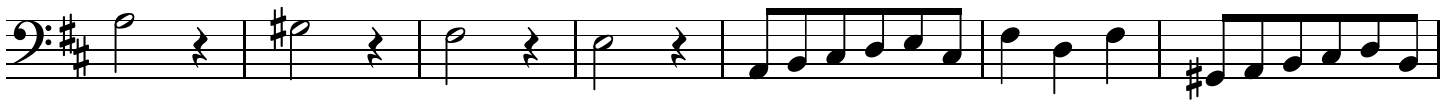
43



50



57



64



70



78



84

Largo

